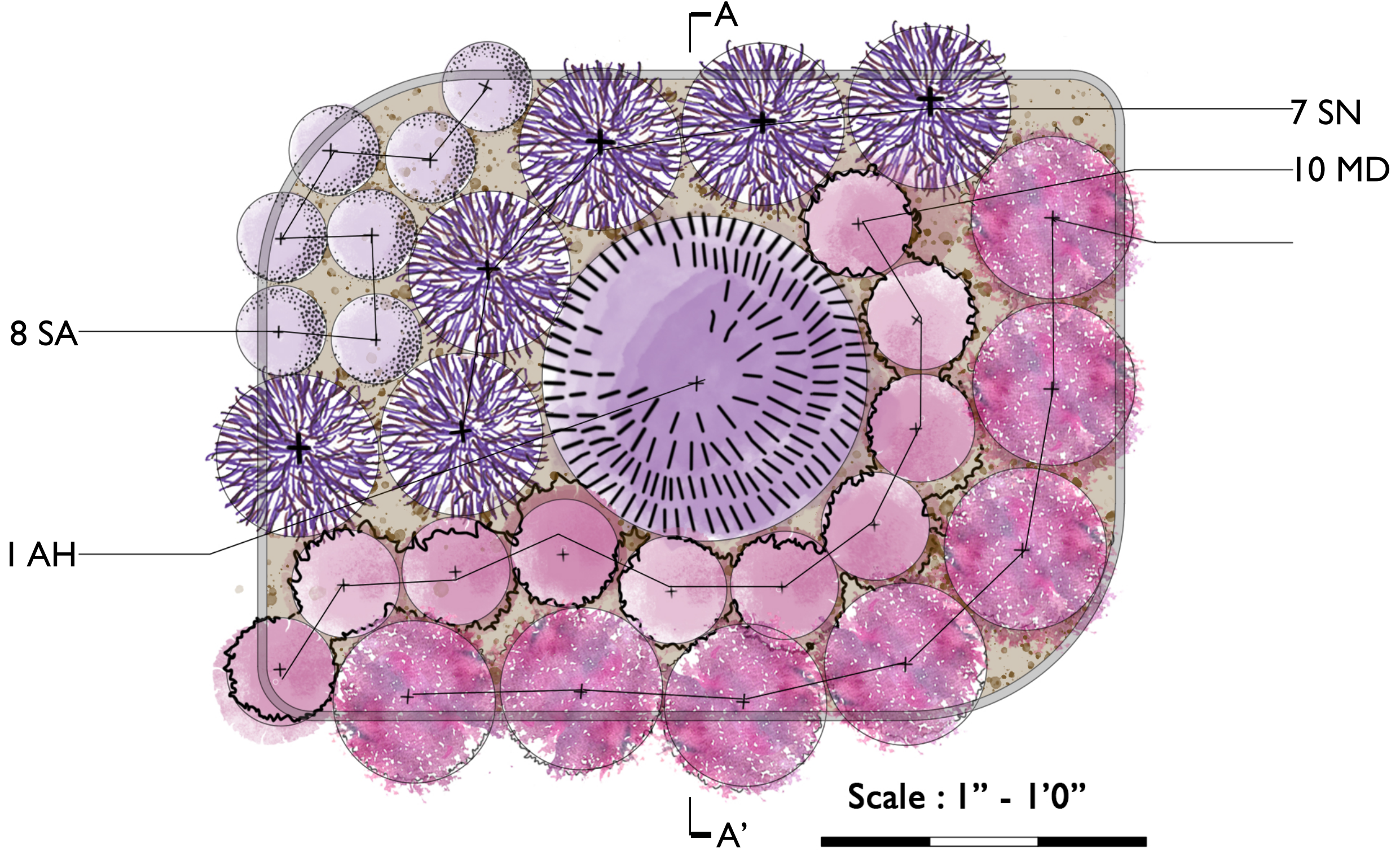


A photograph of a garden filled with purple chives flowers. The flowers are in various stages of bloom, with some fully open and others as buds. The background is a soft-focus green, suggesting foliage. The text "SUNNY PERENNIAL GARDEN COLLECTION" is overlaid in a bold, black, serif font, centered horizontally and vertically.

**SUNNY PERENNIAL
GARDEN COLLECTION**

PLANTING PLAN - SUNNY PERENNIAL GARDEN ISLAND BED



PLANT SCHEDULE

Symbol	Quantity	Botanical Name	Common Name	Height	Spread	Spacing (Avg.)	Sun-Shade	Soil Type	Moisture	Bloom Color	Bloom Time	Pollinator	Bird	Native	Deer resistant	Other
AH	1	<i>Amsonia hubrichtii</i>	Arkansas Amsonia	36"	36"	36"	full sun	Dry, Sandy	Average	Blue	Spring	yes	no	yes	yes	Fall Color - Attractive yellow, Rain Garden Plants
SN	7	<i>Salvia nemerosa</i> 'May Night'	Sage - Hybrid	18"	18"	18"	full sun	Dry, Sandy	Average	Purple	Summer, spring	yes	no	no	yes	Fragrant - Foliage
MD	10	<i>Monarda didyma</i> 'Petite Delight'	Bee Balm	12"	12"	12"	full sun	Dry, moist	Average	Lavender / Purple	Summer	yes	yes	yes	yes	Rain Garden Plants, compact habitat
SA	8	<i>Sisyrinchium angustifolium</i> 'Lucerne'	Blue Eyed Grass	8"	10"	10"	full sun	Dry, Sandy	Average	blue	Summer	no	no	yes	yes	Foot Traffic Tolerant, Groundcover
PS	7	<i>Phlox subulata</i> 'Drummond's Pink'	Phlox - Moss	6"	18"	18"	full sun	Dry, Sandy	Average	Pink	Spring	yes	no	yes	yes	Lawn Alternative, ground cover, Foot Traffic Tolerant

PLANT PALETTE



Amsonia hubrichtii
Arkansas Amsonia



Sisyrinchium angustifolium
'Lucerne'
Blue Eyed Grass



Salvia nemerosa 'May Night'
Sage - Hybrid



Monarda didyma 'Petite Delight'
Bee Balm



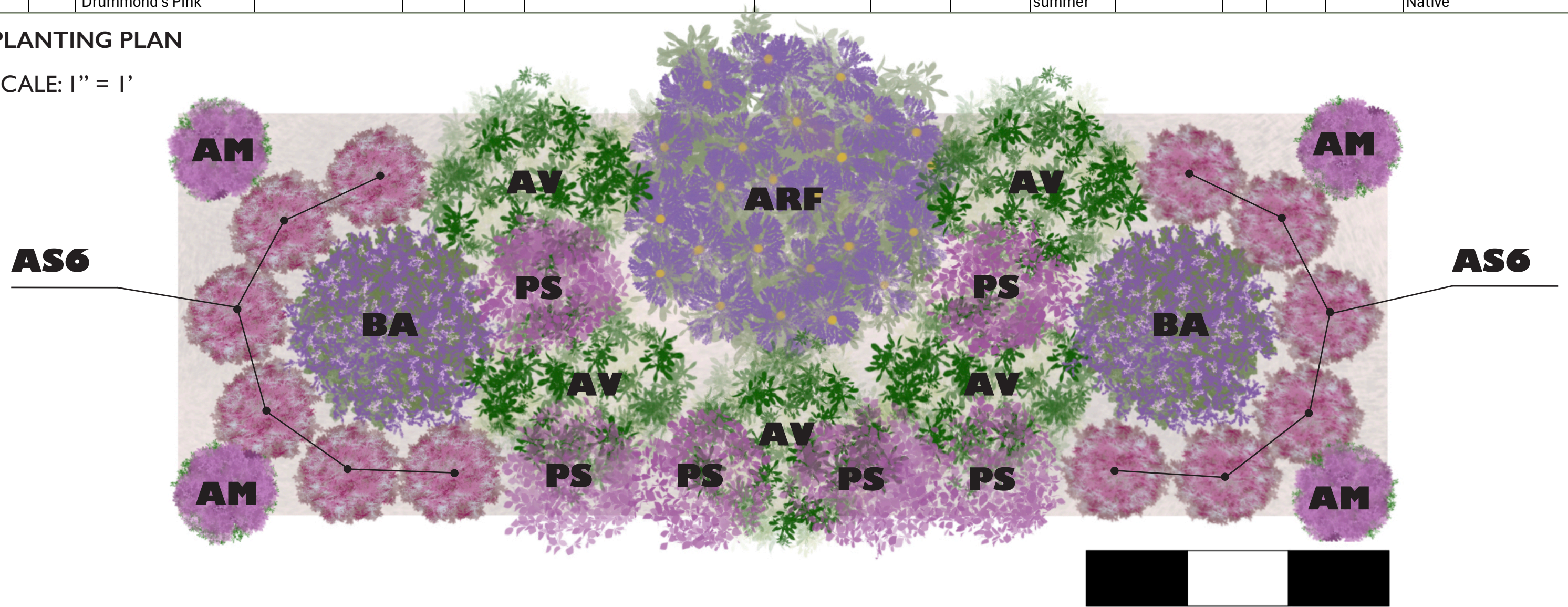
Phlox subulata
'Drummond's Pink'
Phlox - Moss

PLANT SCHEDULE

QTY	KEY	BOTANICAL NAME	COMMON NAME	HEIGHT	SPREAD	SUN/SHADE	SOIL TYPE	MOISTURE	BLOOM COLOR	BLOOM TIME	ATTRACTS POLLINATORS	BIRD	NATIVE	DEER RESISTANT	OTHER
2	BA	Agastache x 'Black Adder'	Anise Hyssop	24"	24"	full sun	average, dry	average	blue	fall, summer	yes	yes	no	yes	Foliage color- green
4	AM	Allium 'Millenium'	Ornamental Onion	18"	12"	full sun to partial shade	average, dry, sandy	average	lavendar/ purple	summer	yes	no	no	yes	Fragrant- foliage
12	AS	Asclepias speciosa	Milkweed - Showy	24"	12"	full sun	average, dry	average	pink, white	spring, summer	yes	yes	yes	yes	Foliage color - green-gray/green-silver
5	AV	Aseclepias verticillata	Milkweed - Whorled	30"	24"	full sun to partial shade	average, dry, sandy	average	white	summer	yes	yes	yes	yes	Foliage color- green
1	ARF	Aster oblongifolius 'Raydon's Favorite'	Aster - Aromatic	36"	36"	full sun	average, dry, sandy	average	blue	fall, summer	yes	no	yes	yes	Foliage color - green
6	PS	Phlox subulata 'Drummond's Pink'	Phlox - Moss	6"	18"	full sun	Sandy,Dry	Average	Pink	spring, summer	yes	no	yes	yes	Foliage color - green Native

PLANTING PLAN

SCALE: 1" = 1'



PLANT PALETTE

SEASONAL BLOOM DIAGRAM

SPRING

SUMMER

FALL

WINTER

CHARACTERISTICS & ATTRIBUTES

ANISE HYSSOP
AGASTACHE X
'BLACK ADDER'



ATTRACTS BUTTERFLIES & HUMMINGBIRDS
FRAGRANT- FOLIAGE
FOLIAGE COLOR - GREEN
TOLERANCE - DROUGHT

ORNAMENTAL ONION
ALLIUM' MILLENIUM



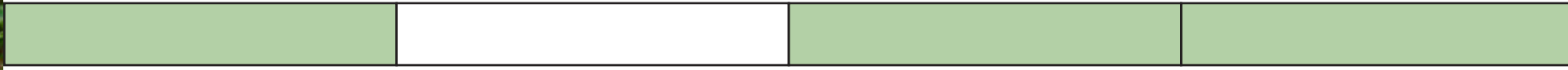
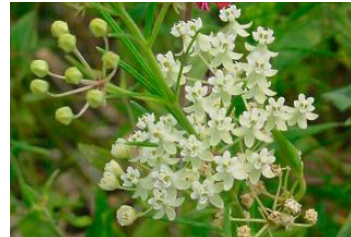
ATTRACTS BUTTERFLIES
FRAGRANT- FOLIAGE
TOLERANCE - DROUGHT, SALT

MILKWEED - SHOWY
ASCLEPIAS SPECIOSA



ATTRACTS BUTTERFLIES & HUMMINGBIRDS
TOLERANCE - DROUGHT
FOLIAGE COLOR - GREEN-GRAY/
GREEN- SILVER
FRAGRANT - FLOWER

MILKWEED - WHORLED
ASCLEPIAS
VERTICILLATA



ATTRACTS BUTTERFLIES & HUMMINGBIRDS
TOLERANCE - DROUGHT
FOLIAGE COLOR - GREEN

ASTER - AROMATIC
ASTER
OBLONGIFOLIUS
'RAYDON'S FAV.'



GROUND COVER
ATTRACTS BUTTERFLIES
TOLERANCE - BLACK WALNUT,
DROUGHT
FOLIAGE COLOR - GREEN

PHLOX - MOSS
PHLOX SUBULATA
'DRUMMOND'S
PINK'



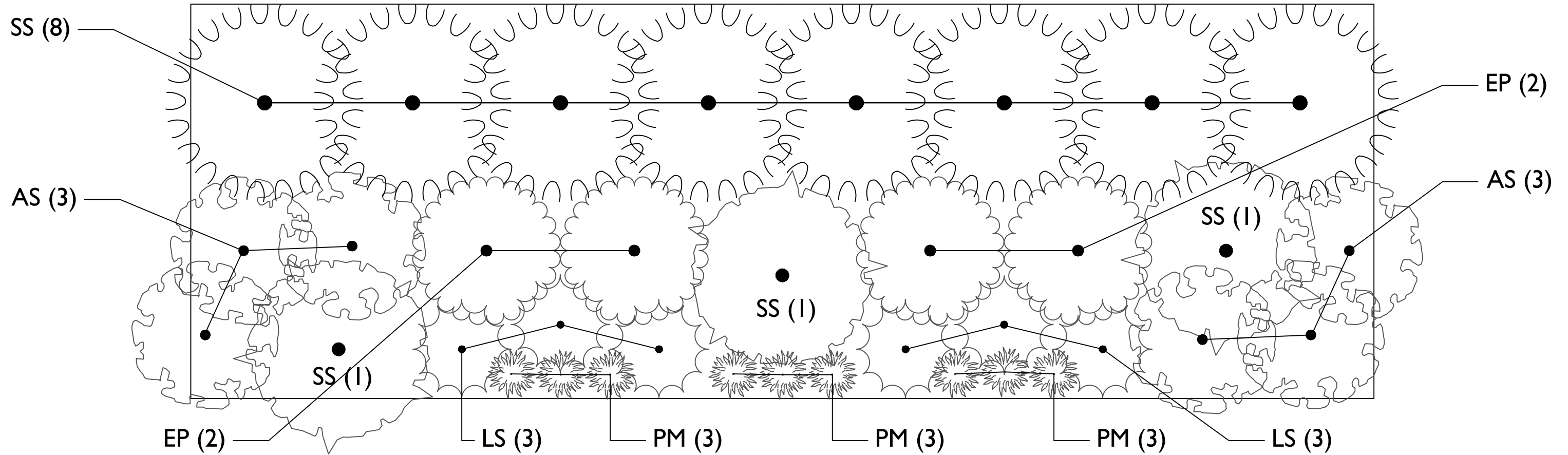
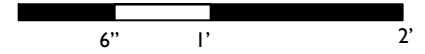
LAWN ALTERNATIVE
GROUND COVER
FOOT TRAFFIC TOLERANT
ATTRACTS BUTTERFLIES & POLLINATORS
NATIVE
FOLIAGE COLOR - GREEN







Planting Plan & Schedule

4' x 12' Planting Bed - Against House - Full Sun

Native, Pollinators - Zone 7A

Scale: 1" = 1'



SYMBOL	QTY	CODE	BOTANICAL / COMMON NAME	HEIGHT	SPREAD	SPACING	SUN / SHADE	SOIL TYPE	MOISTURE	BLOOM COLOR	BLOOM TIME	POLLINATOR	BIRD	NATIVE	DEER	OTHER
	6	AS	<i>Asclepias speciosa</i> / Showy Milkweed	24"	18"	18"	Full sun	Dry to Medium	Average	Purple/Rose	May to June	Yes	Yes	Yes	No	Drought tolerant
	9	PM	<i>Callirhoe involucrata</i> / Purple Poppymallow	6 - 12"	6 - 12"	12"	Full sun	Dry to Medium	Average	Magenta	May to June	Yes	Yes	Yes	No	Drought tolerant
	4	EP	<i>Echinacea purpurea</i> / Coneflower	24 - 36"	24"	12 - 18"	Full sun to part shade	Dry, Sandy	Average	Purple/Pink	June to August	Yes	Yes	Yes	No	Drought tolerant
	6	LS	<i>Liatris spicata</i> 'Kobold' / Kobold Blazing Star	18 - 24"	12"	12"	Full sun	Moist	Average	Dark Purple	July to August	Yes	Yes	Yes	No	Drought tolerant
	8	SS	<i>Schizachyrium scoparium</i> 'Standing Ovation' / Standing Ovation Little Bluestem	24 - 48"	24"	18 - 24"	Full sun	Dry to Medium	Average	White seed heads	August to February	Yes	Yes	Yes	No	Winter interest
	3	GR	<i>Solidago sphaecelata</i> 'Golden Fleece' / Autumn Goldenrod	12 - 18"	24"	12 - 24"	Full sun	Dry to Medium	Average	Yellow	August to September	Yes	Yes	Yes	No	Drought tolerant

Plant Palette & Bloom Schedule

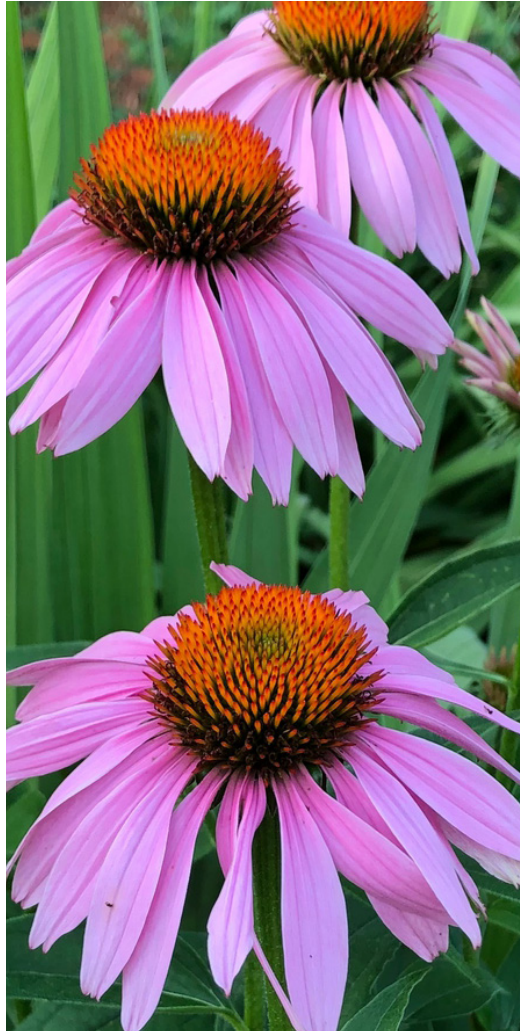
Botanical Name	Common Name	January	February	March	April	May	June	July	August	September	October	November	December
<i>Asclepias speciosa</i>	Showy Milkweed												
<i>Callirhoe involucrata</i>	Purple Poppymallow												
<i>Echinacea purpurea</i>	Coneflower												
<i>Liatris spicata 'Kobold'</i>	Kobold Blazing Star												
<i>Schizachyrium scoparium 'Standing Ovation'</i>	Standing Ovation Little Bluestem												
<i>Solidago sphacelata 'Golden Fleece'</i>	Autumn Goldenrod												



Asclepias speciosa
Showy Milkweed



Callirhoe involucrata
Purple Poppymallow



Echinacea purpurea
Purple Coneflower



Liatris spicata 'Kobold'
Kobold Blazing Star



Schizachyrium scoparium 'Standing Ovation'
Standing Ovation Little Bluestem



Solidago sphacelata 'Golden Fleece'
Autumn Goldenrod