

A lush green rain garden with tall grasses and purple flowers. The garden is filled with various types of grasses, including tall, thin blades and broader, sword-shaped leaves. Several purple flowers are scattered throughout the scene, adding a splash of color to the greenery. The background shows a dense thicket of trees and shrubs, suggesting a natural, wooded setting. The overall atmosphere is vibrant and healthy.

**RAIN GARDEN  
COLLECTION**



# RUTGERS GARDENS

## RAIN GARDEN - PARTIAL SHADE



VIB - Viburnum dentatum 'Blue Muffin'



LOB - Lobelia cardinalis



PAC - Packera aurea



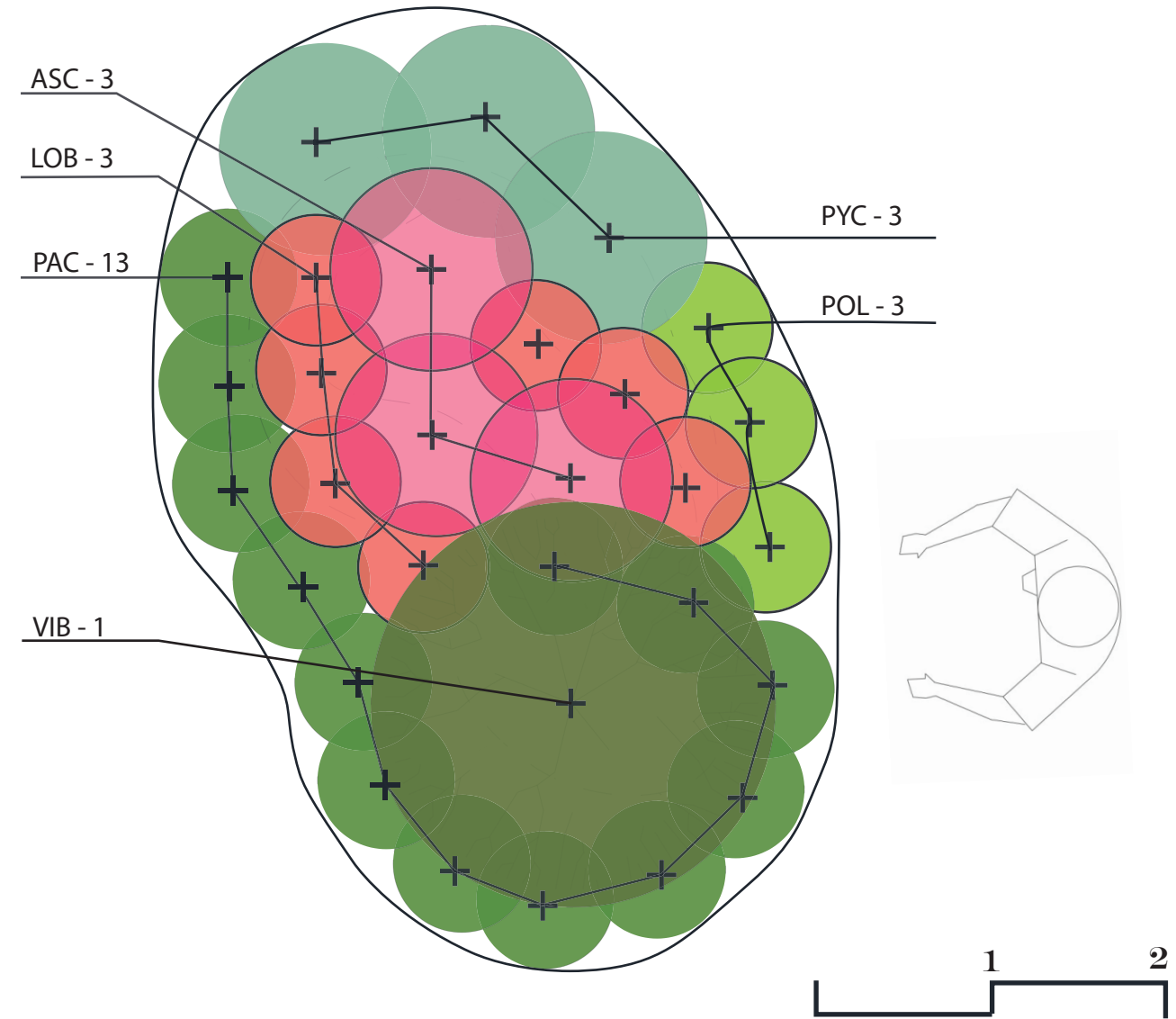
POL - Polystichum acrostichoides



ASP- Asclepias incarnata

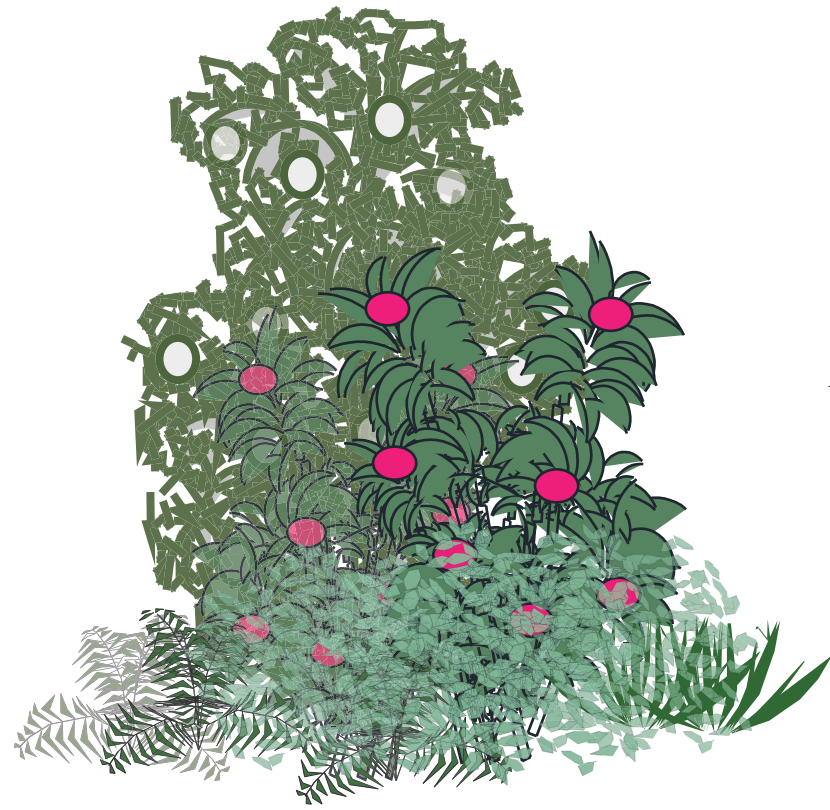


PYC - Pycnanthemum Muticum

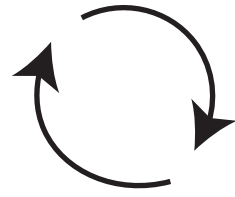


Code	Quantity	Botanical Name	Common Name	Height	Spread	Sun-shade	Soil Type	Moisture	Zone	Bloom Color	Bloom Time	Pollinator	Native	Deer Resistant
PYC	3	Pycnanthemum muticum	Mountain mint	1-3'	1-3'	Full Sun - Full Shade	Avg	Wet	4	Pink	Summer	Yes	Yes	Yes
ASP	3	Asclepias incarnata	Swamp Milkweed	3-5'	2'	Full sun - Part Shade	Avg (Clay tol)	Wet	3-9	Pink	Summer	Yes	Yes	Yes
VIB	1	Viburnum dentatum Blue Muffin	Viburnum - Arrowwood	3-5'	3-5'	Full Sun - Part Shade	Avg - sandy	Medium - Wet	3	White	Spring	yes	yes	yes
PAC	13	Packera aurea	Groundsel - golden	2'	18"	Full Sun - Part Shade	Avg	Medium - Wet	4	Yellow	Spring	Yes	Yes	Yes
LOB	7	Lobelia cardinalis	Cardinal Flower	3'	2'	Full Sun - Full Shade	Avg	Wet	3	Red	Fall	Yes	Yes	Yes
POL	3	Polystichum acrostichoides	Christmas Fern	18"	18"	Part Shade - Full Shade	Avg	Medium - Wet	3	---	---	No	No	Yes



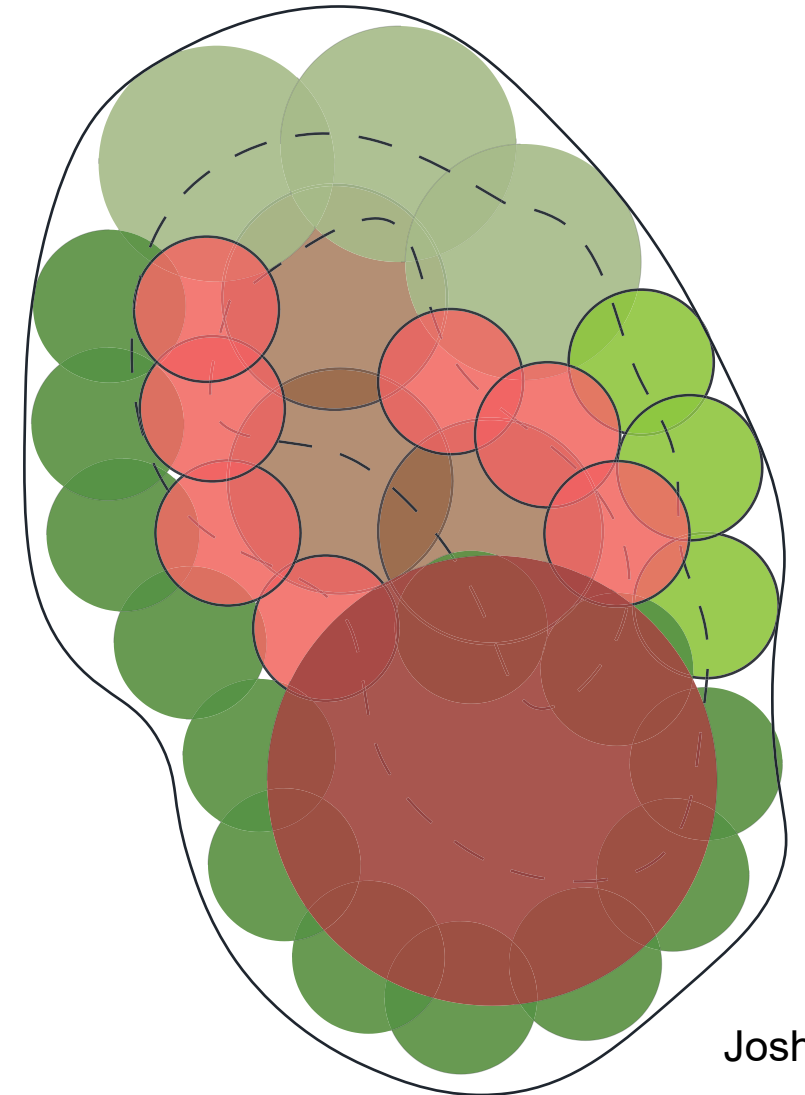
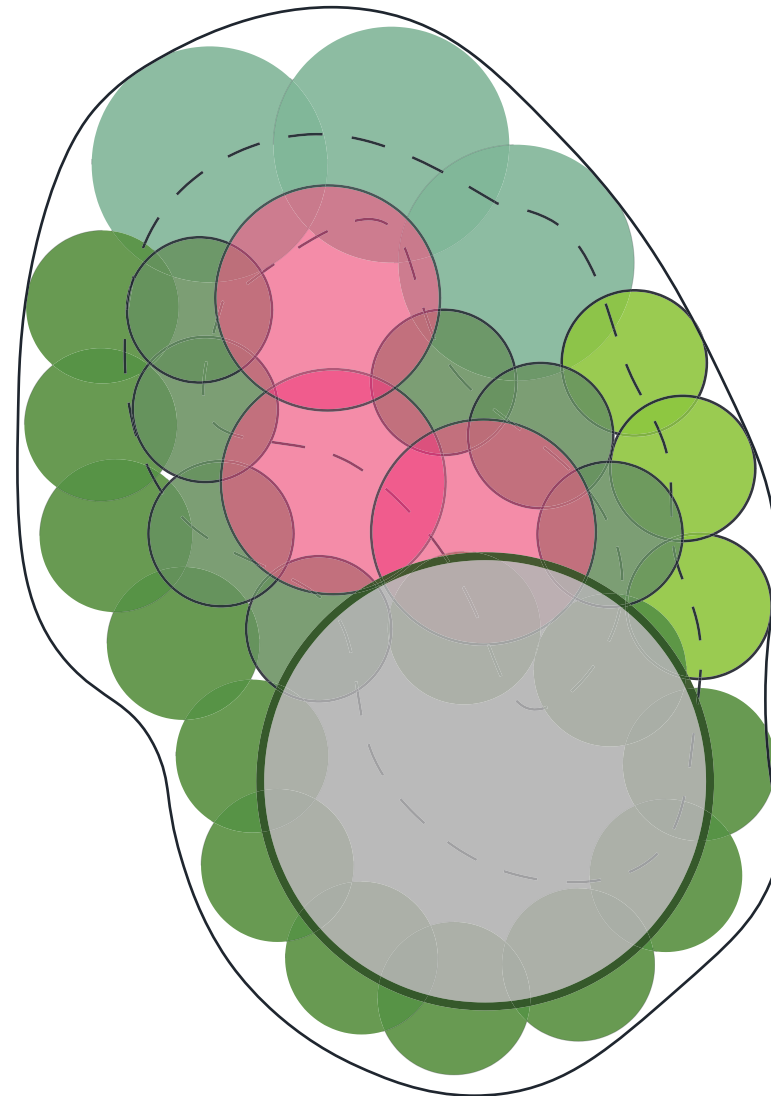
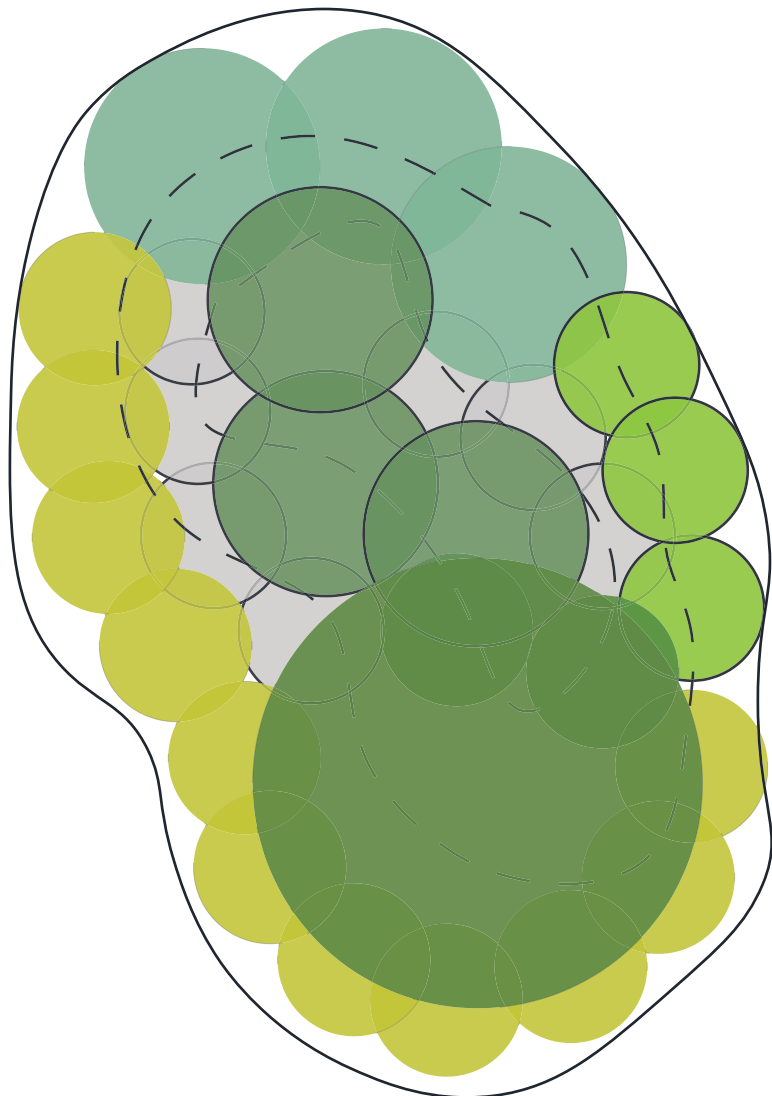


**SPRING**

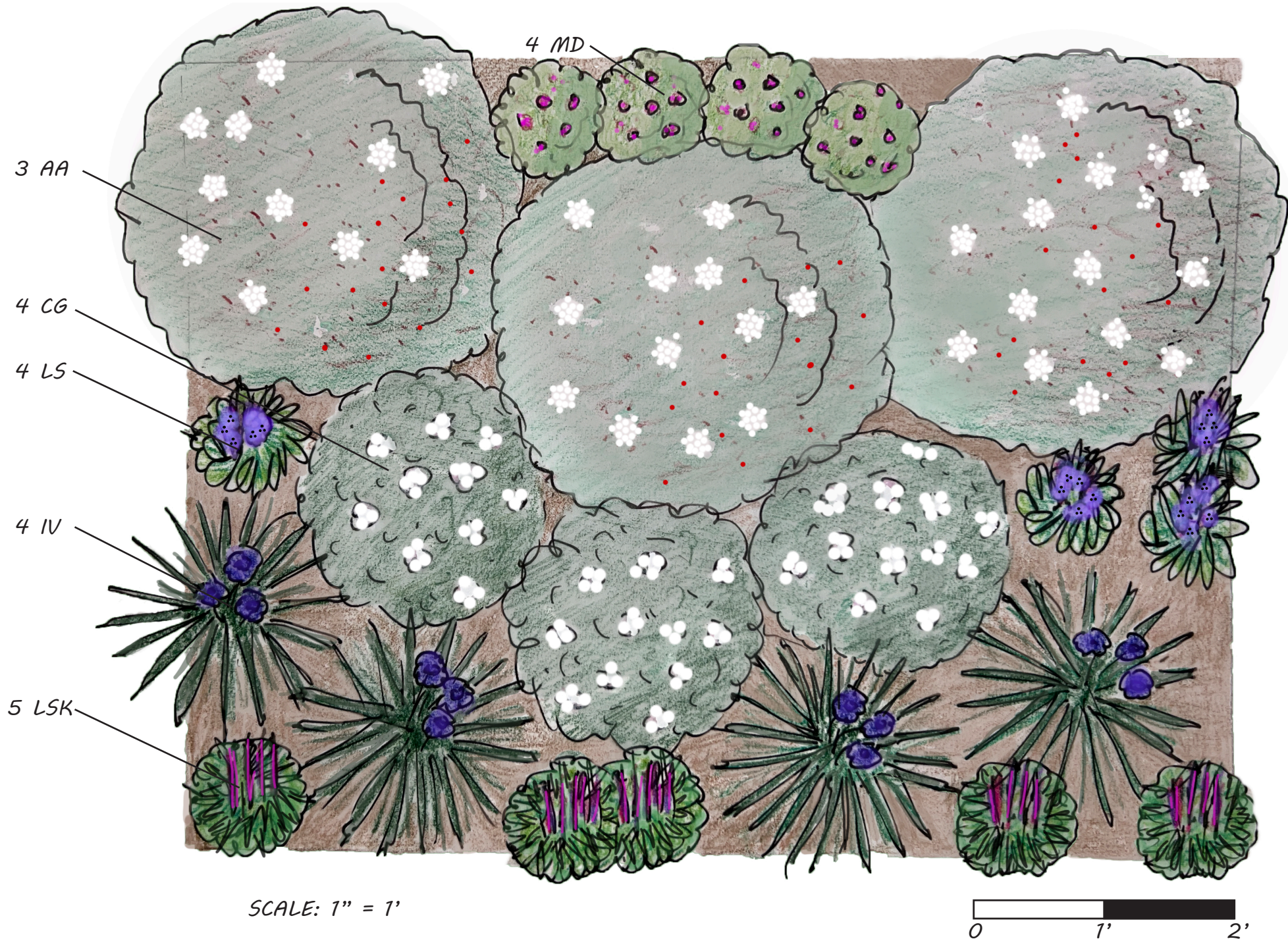


**SUMMER**

**FALL**







Brilliant Red Chokeberry



White Turtlehead



'Purple Flame' Iris



'Kobold' Gayfeather



Blue Cardinal Flower



'Petite Delight' Bee Balm

SCALE: 1" = 1'



QTY	KEY	BOTANICAL NAME	COMMON NAME	SPACING	BLOOM TIME	ADDITIONAL INFO
<b>Shrubs</b>						
3	AA	<i>Aronia arbutifolia</i> 'Brilliantissima'	Brilliant Red Chokeberry	42"	Early Spring	Great red fall color; attracts birds
<b>Herbaceous</b>						
3	CG	<i>Chelone glabra</i>	White Turtlehead	24"	Late summer-Fall	Attracts pollinators
4	IV	<i>Iris versicolor</i> 'Purple Flame'	'Purple Flame' Iris	24"	Spring	Attracts pollinators
3	LS	<i>Liatris spicata</i> 'Kobold'	'Kobold' Gayfeather	12"	Summer	Attracts pollinators
4	LSK	<i>Lobelia siphilitica</i>	Blue Cardinal Flower	18"	Summer-Fall	Attracts pollinators
4	MD	<i>Monarda didyma</i> 'Petite Delight'	'Petite Delight' Bee	12"	Summer	Attracts pollinators

Notes:

- Rain garden excavation should not exceed 1' depth for every 3' of run (as drawn the depth should not exceed 8")
- Planting pattern can be repeated side by side
- The rain garden area should be excavated an additional 12" and the existing soil replaced with a sandy topsoil blend
- Rain gardens should be installed a minimum of 5' from house foundation





DESIGNER:



Sean Murray  
2nd Year MLA Student

SCALE: 1" = 1'



COMMON NAME	JAN	FEB	MAR	APRIL	MAY	JUNE	JULY	AUG	SEPT	OCT	NOV	DEC
Brilliant Red Chokeberry	Berries									Fall Color		Berries
White Turtlehead												
'Purple Flame' Iris												
'Kobold' Gayfeather												
Blue Cardinal Flower												
'Petite Delight' Bee Balm												

**RAIN GARDEN DESIGN FOR FULL SUN**